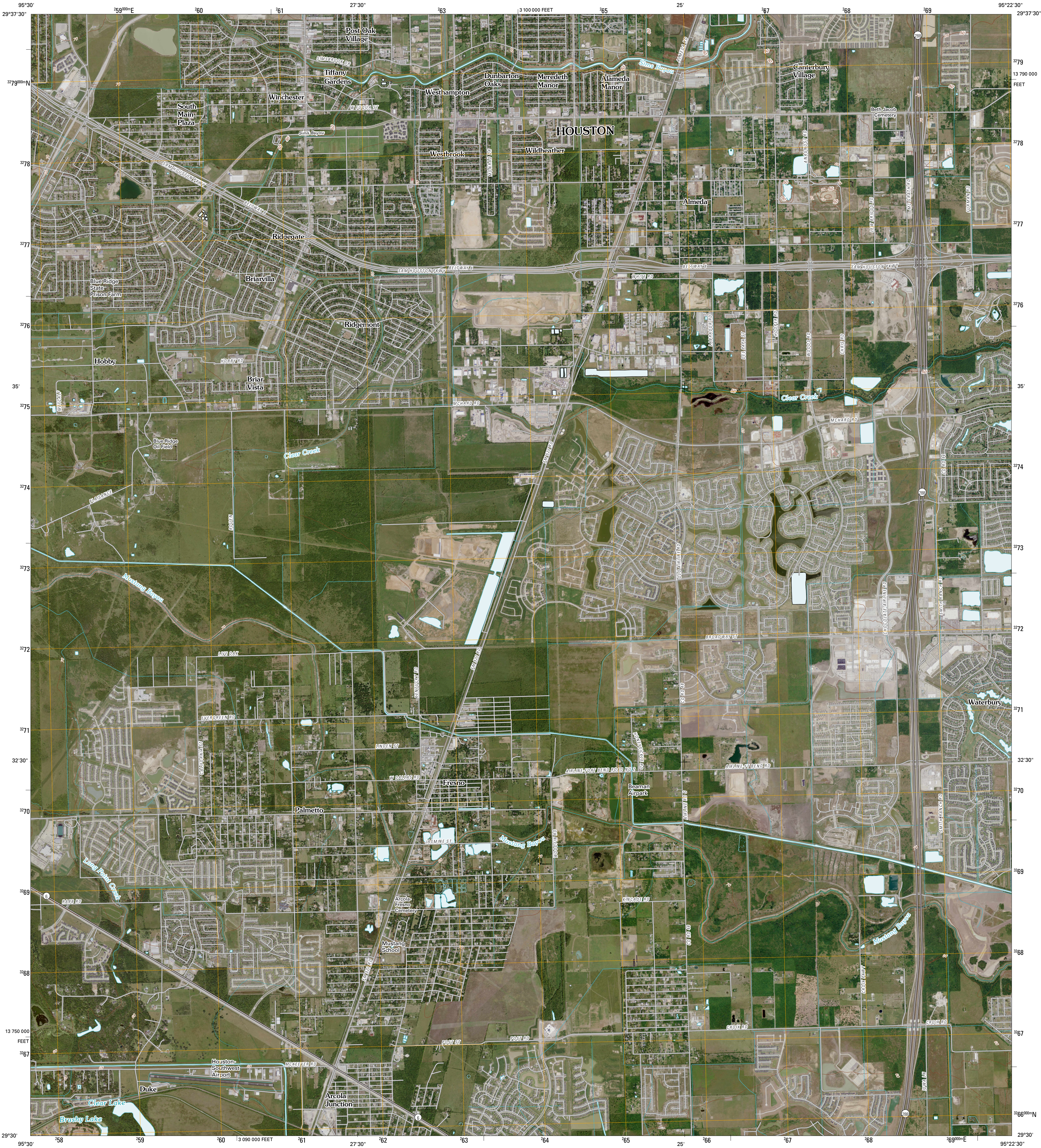




U.S. DEPARTMENT OF THE INTERIOR
U. S. GEOLOGICAL SURVEY

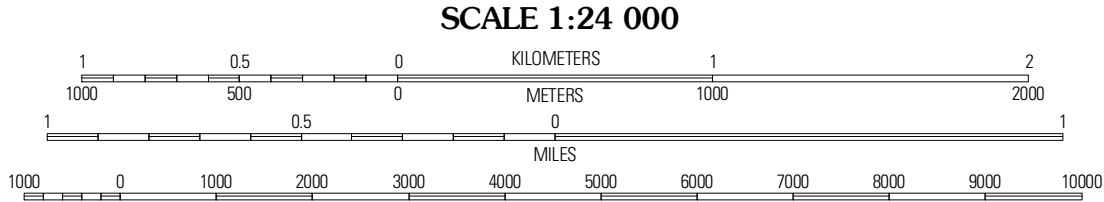
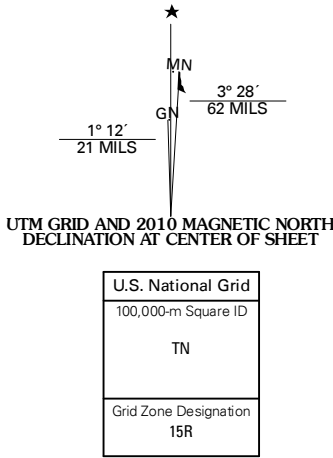


ALMEDA QUADRANGLE
TEXAS
7.5-MINUTE SERIES



Produced by the United States Geological Survey
North American Datum of 1983 (NAD83)
World Geodetic System of 1984 (WGS84) Projection and
1 000-meter grid: Universal Transverse Mercator, Zone 15R
10 000-foot ticks: Texas Coordinate System of 1983
(south central zone)

Imagery.....NAIP, January 2009
Roads.....US Census Bureau TIGER data
with limited USGS updates, 2004 - 2006
Names.....GNIS, 2008
Hydrography.....National Hydrography Dataset, 1995
Contours.....National Elevation Dataset, 2004



CONTOUR INTERVAL 10 FEET

This map was produced to conform with version 0.5.10 of the
draft USGS Standards for 7.5-Minute Quadrangle Maps.
A metadata file associated with this product is also draft version 0.5.10



| QUADRANGLE LOCATION | | |
|---------------------|----------|------------|
| Alief | Bellaire | Park Place |
| Missouri City | Alameda | Pearland |
| Thompson's | Julliff | Marcel |

ADJOINING 7.5' QUADRANGLES
TX 2995-422

| ROAD CLASSIFICATION | | |
|---------------------|-------------|--|
| Interstate Route | State Route | |
| US Route | Local Road | |
| Ramp | 4WD | |

ALMEDA, TX
2010